

High Energy Solar Alpha Particles are Dangerous for the People on the Earth's Surface

Nikolay Takuchev*

Trakia University, Stara Zagora, Bulgaria

***Corresponding author:** Nikolay Takuchev, Trakia University, Stara Zagora, Bulgaria, E-mail: nnnpppttt@gmail.com

Received date: 22-July-2023, Manuscript No. tspa-23-109898; **Editor assigned:** 24-July-2023, Pre-QC No. tspa-23-109898 (PQ); **Reviewed:** 10-August-2023, QC No. tspa-23-109898 (Q); **Revised:** 12-August-2023, Manuscript No. tspa-23-109898 (R); **Published:** 31-August-2023, DOI. 10.37532/2320-6756.2023.11(8).370

Abstract

According to the World Health Organization, ischemic heart disease is at the top of the list of morbid causes of death on the planet. In the present work: 1. Data are given showing a dangerous phenomenon - an impact of high energy positively charged particles of solar origin on mortality from ischemic heart disease; 2. A hypothetical mechanism is proposed to explain this dangerous phenomenon; and 3. This mechanism can be used to determine from satellite data specific points on the planet's surface where increased mortality from ischemic heart disease should have occurred on specific dates. The hypothetical mechanism was applied to analyze sudden unexplained spikes in the number of deaths from ischemic heart disease in the United States on September 27th and September 29th, 1975.

Keywords: *Dangerous phenomenon; Ischemic heart disease*

I. Introduction

According to statistics from the World Health Organization (WHO), Ischemic Heart Disease (IHD) is at the top of the list of disease causes of death on the planet [1]. In the International Disease Classifier (ICD, 10th revision) IHDs are classified in classes I20-I25. According to WHO data, 8.9 million people died worldwide from IHD in pre-pandemic 2019 [2]. According to the incidence and mortality of IHD (the number of cases and the number of deaths from IHD per 100,000 people) are not spread evenly across the planet. The highest mortality from IHD is in a region including Central and Eastern Europe [3].

Causes of death from IHD can be heredity, age, sex, lifestyle, and diseases. A study was conducted aimed at clarifying whether IHD deaths were related to external causes-geomagnetic field interference, solar radiation-corpussular and electromagnetic (X-ray and ultraviolet radiation), the cyclicity of solar activity, and variations of galactic cosmic rays.

As a result of this study, a space phenomenon was noticed which also contributes to IHD mortality. This phenomenon was first noticed in the mortality data for Bulgaria (Eastern Europe), but the examples below are for Kyrgyzstan (Central Asia) and the USA, two countries at a great distance from each other, which allows us to conclude the influence of the described phenomenon on a planetary scale.

Material and Methods

A prerequisite for this kind of study is the availability of reliable data-both on possible space impacts and mortality from IHD.

Citation: Takuchev N. High Energy Solar Alpha Particles are Dangerous for the People on the Earth's Surface. J. Phys. Astron.2023;11(8):370.

©2023 Trade Science Inc.

More complex is the problem of the reliability of mortality data. Their obtainment requires a combination of good medical diagnostics covering the territory of the respective country, accurate administrative reporting, adequate national statistics, and easy access to statistical data for scientific purposes.

The analysis below is based on medical statistics from United Nations Statistics Division for Kyrgyzstan and from the National Center for Health Statistics (NCHS) for the USA, for which the requirements listed above are fulfilled to the greatest extent. Kyrgyzstan is located in a mountain region with an average altitude of 2988 m, latitude of country centroid of 41.5° , and a high death rate from IHD [4, 5].

The U.S. is not the most affected by this cosmic phenomenon, but it is included in the study because it has detailed medical statistics and access to it for researchers around the world is easy and free. The United States is the only country in the world to provide records of all individual deaths within the country. They are a symbolic line of codes with a variety of information about the deceased. For the study, software was created to extract information about the location (state), month and day of death and the cause of death by ICD. This gives the possibility to track rapid changes (per day) in mortality from IHD and to draw conclusions about the possible dependence of mortality from IHD with short-term processes in near-Earth space. Unfortunately, the day of death was included in individual records only in data for years before 1993, after which it was no longer monitored. This limits the study of rapid changes in mortality to only the years up to 1992.

Satellite data on corpuscular radiation – protons and alpha particles recorded by the satellites of series SMS (Synchronous Meteorological Satellites) and GOES (Geostationary Operational Environmental Satellites) were obtained from an NOAA site [6]. The satellites of the SMS and GOES series fly in geostationary orbit (above the Earth's equator), at an altitude of 36,000 kilometers above the Earth's surface and make one lap in 24 hours, that is, they "hang" over a certain point on the surface, do not shade from the Earth at their circumference around it. There is one satellite of the series over each of two meridians – over the east coast and the west coast of the United States. Data on alpha-particle and proton fluxes (unit: $(\text{number of particles}) \cdot \text{cm}^{-2} \cdot \text{s}^{-1} \cdot \text{sr}^{-1} \cdot \text{MeV}^{-1}$) were used with energies of the range 3.8 MeV to 21.3 MeV. The fluxes were recorded by the satellite high-energy particle detectors Energetic Particles Sensor (EPS) and Energetic Proton, Electron, and Alpha Detector (EPEAD). The detectors detect in particular alpha particles with energies from 3.8 MeV to 260 MeV, distributed in 6 channels. The data are averaged over a 5-minute interval, during which there are up to 25 reports of the instrument. Particle fluxes become frequent and grow in magnitude over several years, then almost disappear to reappear over time. The largest in value and the most frequent flows for the duration of the GOES satellites were recorded in the interval 1975 to 1979, from which are the examples for the USA below.

Part of the satellite data from the satellites GOES11-14 (operated in orbit in the interval 2007 to 2019) was processed statistically-it was averaged by year and correlations were sought between their average annual values and the annual number of deaths from IHD for Kyrgyzstan.

To track rapid changes in mortality, the number of deaths per day was calculated, both for the entire U.S. and for individual states. The calculations were made for intervals of 7 days. The intervals were chosen to cover the days with satellite-recorded peaks values of alpha particle fluxes.

To the extent that the hypothetical mechanism proposed below explaining the observed phenomenon assumes that charged particles of high energy pass through the atmosphere and reach the Earth's surface, the energy required for this was calculated from databases and calculators PSTAR and ASTAR [7, 8]. Geomagnetic field data were obtained from the INTERMAGNET site [9]. Galactic cosmic ray data were obtained from the NMDB database for 5 European neutron monitors [10, 11]. Data on solar activity,

solar mass discharges (Solar Mass Ejections, SME), solar flares, and coronal holes were obtained from sites [12-16]. Correlation analysis was used to process the data.

Results

A high statistically significant correlation was found between the annual number of deaths from IHD in Kyrgyzstan and the annual average alpha-particle fluxes with high energy in the range 3.8 MeV-9.9 MeV recorded with the high energy particle detectors on satellites GOES11-14 (FIG. 1).

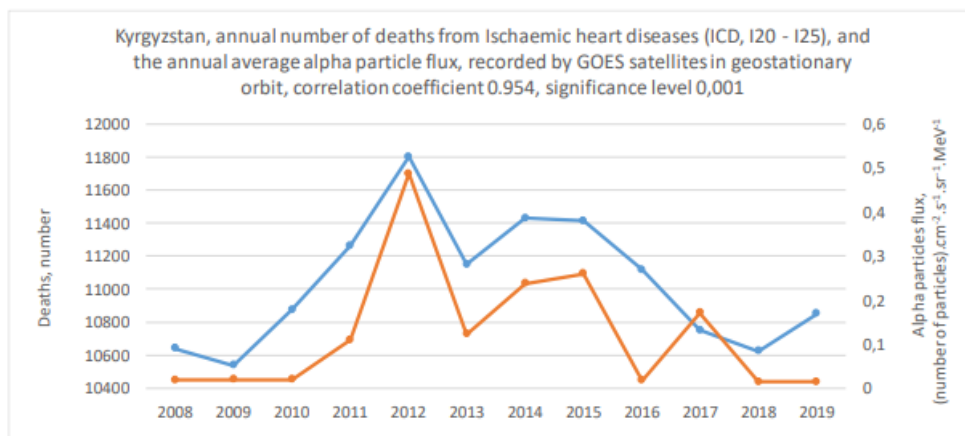


FIG 1. There is a high correlation between annual deaths from IHD in Kyrgyzstan according to United Nations Statistics Division data [4] and the annual flow of alpha particles in geostationary orbit recorded by the satellites GOES [6].

FIG. 2 shows the dependence of the annual number of deaths from IHD in Kyrgyzstan on the annual average flux of alpha particles with energy 3.8 MeV to 9.9 MeV, registered by the GOES satellites in geostationary orbit, for the period 2008-2019. The number of deaths can conditionally split into two

- a constant part independent of years-10800 deaths, and
- a changing through the years part shown in the figure with a dark rectangle.

If it is assumed that the variable part of the number of deaths is due to the effect of the variable flow of alpha particles, then this number varies between 0 and 1000, i.e. alpha particle exposure-related IHD mortality can be as high as 9% in Kyrgyzstan during years with high alpha radiation fluxes. The average for the studied years is about 4.5%.

Particles of relatively small energy are constantly emitted from the Sun, spreading in all directions in the surrounding space – the so-called solar wind. When they invade the Earth's atmosphere, they deviate from the geomagnetic field to the poles, where they enter deeper into the atmosphere. If solar wind particles are the cause of the increased mortality, their effects should be expected to be more noticeable in countries closer to the poles, but such an increase in mortality is not noticeable in countries near the North Geographic Pole. There are no sufficiently reliable and long sequences of mortality data in the Southern Hemisphere, so all the reasoning below is about the Northern Hemisphere.

A well-pronounced relationship between the annual average flux of positively charged high-energy cosmic rays and the annual average mortality from IHD is only noticeable for some small area countries of mid-latitudes such as Kyrgyzstan [17]. For large countries such as the USA, located at the same latitude as Europe, the average annual mortality from IHD does not depend on the

average annual flux of high-energy positively charged cosmic rays. This observation leads to the conclusion that if there is a lethal effect of high-energy positively charged particle radiation on mortality, it is short-lived in time and is in the form of a spatially variable patch of a limited area on the Earth's surface (deadly spot). The effect on mortality from such radiation is noticeable in the statistics of countries with a small area covered entirely by this impact spot but is masked in the statistics of the large countries where it affects only part of the total territory of the country. Masking is the stronger the shorter the impact and when a small part of the territory of the large country is covered by the deadly spot. The alpha radiation recorded by satellites is not continuous over time but is the result of individual short-term peaks. It is natural to expect that it is during these peaks that the harmful effects linking alpha radiation to IHD mortality occur.

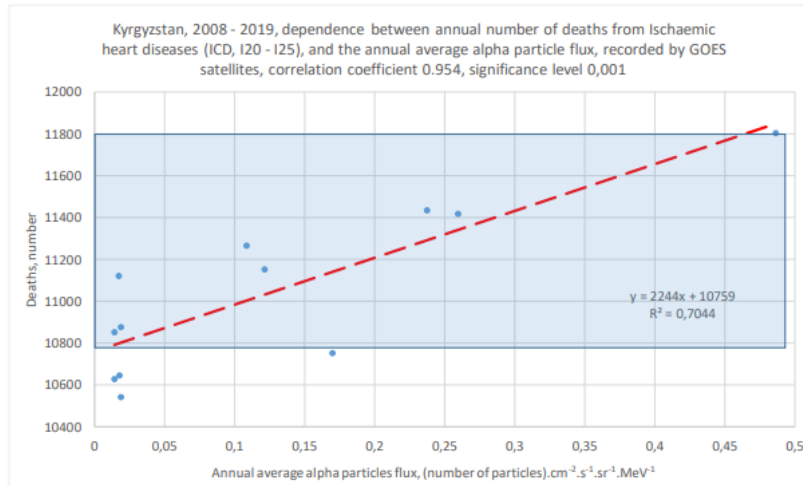


FIG. 2. Dependence of the annual number of deaths from IHD in Kyrgyzstan on the average annual alpha particle flux recorded by the GOES series satellites.

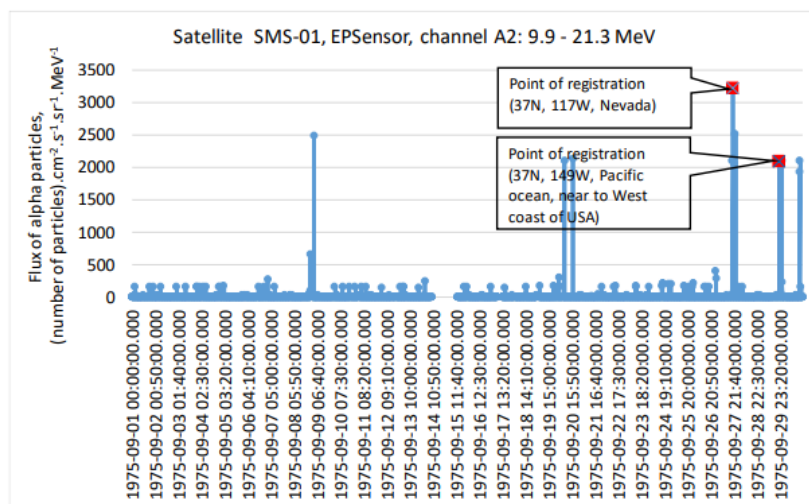


FIG. 3. Several peak streams of alpha particles lasting minutes reaching Earth's orbit were recorded during September 1975. The time of registration of the marked peak on September 27th 20:10 UTC (Universal Time Coordinated) corresponds to local noon over the western part of the US, and the peak on September 29th, 21:55 UTC, corresponds to local noon over the Pacific Ocean, near to the western coast of US.

FIG. 3 shows fluxes for a series of short-lived alpha particle peaks streams, recorded within September 1975. Their duration is less than 5 minutes (the time of averaging the sensor data). They differ in magnitude and time of appearance. Depending on their magnitude, they can have different effects, and depending on the time of their appearance, they can appear over different points on the planet. The analysis below refers to two peaks -on September 27th and September 29th, 1975 recorded at 20:10 UTC, local noon for the western United States, and at 21:55 UTC, which is local noon for the Pacific Ocean near the western United States. The detailed data on individual deaths allows the number of deaths (both males and females) from IHD to be calculated for each of the days of a selected interval and their change to be compared with the change in alpha particle flux in the same interval. A seven-day interval included the two peaks of alpha particle flux, from September 25th to October 1st, which was chosen for the study. The result is shown in **FIG. 4** and **5**.

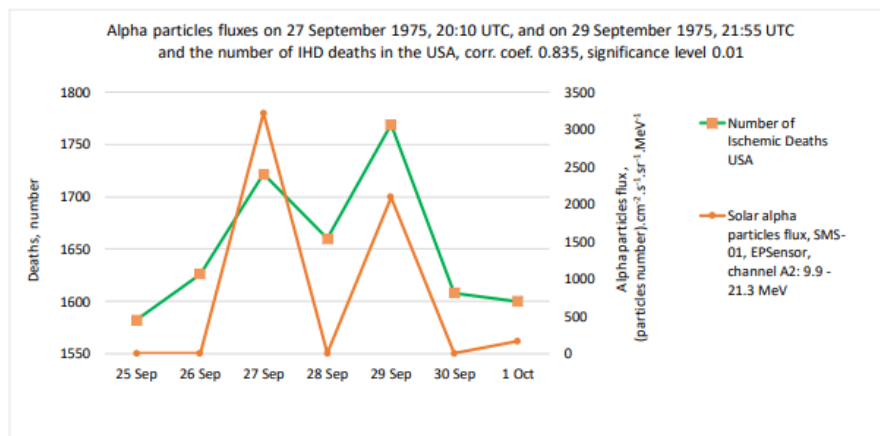


FIG. 4. For the time interval September 25th-October 1st, 1975, there is a high, statistically significant (i.e., reliably established) correlation between the number of IHD deaths in the US and the alpha particle flux recorded by SMS-01.

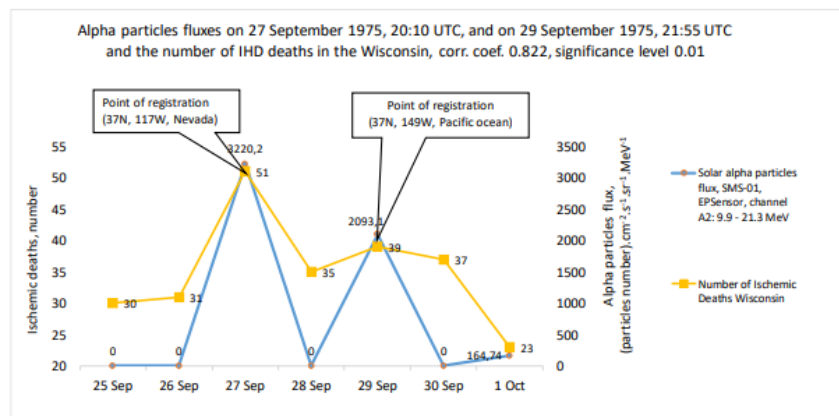


FIG. 5. There is a statistically significant correlation between the alpha radiation flux for the time interval September 25th - October 1st, 1975 and the number of deaths in Wisconsin for the same period.

Mean altitude correlates positively with IHD mortality in countries where the impact of alpha radiation on IHD mortality is noticeable [17]. In particular, the average altitude of Kyrgyzstan, a country with a high rate of IHD deaths is near to 3 kilometers above sea level.

FIG. 6 shows for the time interval September 25th-October 1st, 1975, the dependence of the correlation coefficient between the

number of death cases from IHD for individual states and the flux of alpha radiation for the same time. The correlation coefficient also in this case shows an increasing trend (a dashed line), i.e. with increasing average elevation for the state.

This fact shows that the threat of death due to IHD hangs over our heads and that the impact of alpha radiation on IHD mortality increases with distance from the Earth's surface. The increase in mortality from IHD with height can be explained by the health impact of invading alpha radiation from space that reaches the Earth's surface. At high altitudes, the atmospheric layer in which alpha radiation penetrates is thinner and less dense, as a result of which the radiation flux weakens less and its negative impact on living organisms is stronger. The risk of death from IHD is higher in the mountains.

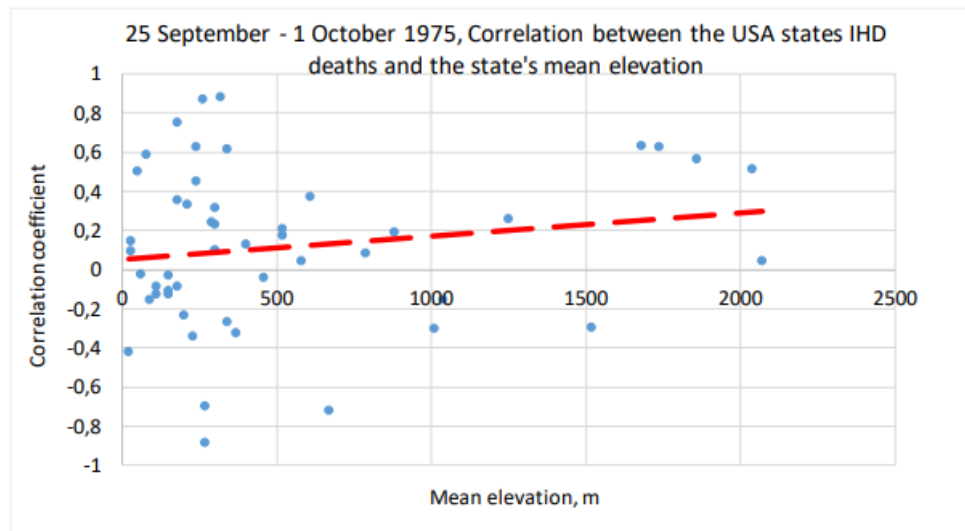


FIG. 6. Dependence of the correlation coefficient between the numbers of IHD deaths on mean altitude for the US individual states. The increasing trend with altitude indicates that the threat of IHD increases with elevation above sea level.

Three observational facts related to the timing of the alpha particle streams are noteworthy – the Sun was an important reference point during the two peaks studied:

- The Sun was maximally elevated above the horizon (local noon) in the western United States (Nevada) in time of 27th September peak, it was local noon in the western United States.
- The Sun was at local noon in the Pacific; near the western coast of the United States at the time of the 29th September peak.
- In many cases, the positively charged particle fluxes that caused the increased mortality from IHD are associated with observable processes on the Sun, such as the SME.

It can be summarized that the source of alpha radiation, affecting human health is the Sun.

The High Energy Proton and Alpha Detector (HEPAD) of the GOES-13 satellite are designed to detect protons reaching Earth orbit with energies up to and above 0.7 GeV, as well as alpha particles with energies up to and above 3.4 GeV [6]. The detector data show that the average proton flux rapidly decreases with the increase in energy and is negligible for energies above 0.7 GeV. The average alpha-particle flux at first decreases with increasing energy but then increases for energies above 3.4 GeV. It follows that

particles with energies of a few GeV can only be alpha particles, so the reasoning and figures above apply only to streams of alpha particles. Alpha particles detected by satellites in Earth orbit have received a large acceleration. For comparison, the source of unaccelerated alpha radiation with the greatest energy on the Earth's surface, the radionuclide Californium-252, emits alpha particles with an energy of 6.217 MeV, which is two orders of magnitude less energy than the energy of the alpha particles registered by satellite detectors [18].

No statistically significant correlations of IHD mortality were found for the other possible space impacts listed above.

Hypothetical Mechanism of the Described Phenomenon

- Streams of high-energy alpha particles affecting the physiology of humans on the surface of planet Earth and causing death from IHD are emitted by processes on the Sun. Streams of high-energy positively charged particles have nothing to do with the solar wind, whose particles are constantly emitted in all directions and move tens of times slower.
- The lethal effects are due to alpha particles penetrating through the atmosphere and reaching the Earth's surface. It can be calculated that only particles whose energy is above 2.4 GeV for protons and over 6.2 GeV for alpha particles could penetrate the atmosphere to Earth's surface [17]. As it became clear above, with such energy in a near-Earth orbit, only alpha particle fluxes were recorded. Entering the human body, these particles are capable of causing massive ionization, damaging biological tissue, and even nuclear reactions, causing the appearance of a beam of many other particles that also damage tissue through ionization. Probably the most sensitive to such damage is the circulatory system, in which, as a result of ionization, clots can form, carried by the bloodstream to vital organs. There, the clots can cause blockage of a vital blood vessel. Elderly people with already damaged and narrowed blood vessels are especially at risk.
- During the year, the solar culmination (the angle of maximum elevation of the Sun above the horizon during the day at local noon), which is different for different geographical latitudes, changes its magnitude in time as well. For the Northern Hemisphere from a minimum value on December 21 (early winter) reaches a maximum value on June 21 (early summer), then decreases back. When for the observation point from the Earth's surface the Sun is at its culmination, the invading particles from the Sun move through the thinnest part of the atmosphere, i.e. the probability of penetration to the Earth's surface is greatest. The alpha particles that the detectors on the satellites register do not have the necessary energy to pass through the atmosphere and reach the Earth's surface.
- It is assumed that alpha particles with very high energy-several GeV-reach the Earth's orbit. They remain not registered by the satellites because their energy exceeds the energy range for which their sensors are designed. Undetected high energy alpha particles likely arise as a result of an explosive process on the Sun simultaneously or around the time of occurrence of the alpha particles detected by the satellite sensor. An alpha particle energy of the order of a few GeV means that it is moving at a speed close to the speed of light. For example, one can calculate that an alpha particle with a rest mass of $6.64465723 \cdot 10^{-27}$ kg, with an energy of 7 GeV ($1.12152411 \cdot 10^{-9}$ J) moves at a speed of 281000 km/s and travels the distance from the Sun to the Earth (149.6.106 km) in 8.87 min. That is, the alpha particles capable of passing through the Earth's atmosphere are so fast that they arrive at the observation point on the Earth's surface directly from the center of the Sun's disk, minutes after being emitted from the Sun's surface.
- It can be calculated that alpha particles detected by the satellite with energy in the range of 5 MeV-10 MeV reach the Earth's orbit about two hours later than the hypothetical fast particles in the example above. Registered particles cannot

penetrate the atmosphere, i.e. they are only an indicator, delayed by two hours, of the hypothetical very high-energy particles that reach the Earth's surface (if both the hypothetical and the indicator alpha particles are emitted simultaneously in a common blast process of the Sun). This means that the meridian with the solar culmination at the time of registration of the indicator radiation by the satellite is 30° west of the meridian at which the hypothetical alpha radiation reached the Earth's surface two hours earlier (the Earth rotates at an angular velocity of 15° /hour). That is, the damage to humans from the hypothetical alpha radiation would have occurred 2 hours before the detection of the indicator radiation by the satellite and the center of the deadly spot would have been 30° east of the meridian of registration.

- Both indicator alpha particles and hypothetical fast alpha particles with energies of the order of GeV irradiate the entire sunlit part of the Earth's atmosphere. Indicator alpha particles do not reach the Earth's surface. Hypothetical fast alpha particles can penetrate to the Earth's surface only in a limited region where favorable penetration conditions are combined, the first of which was noted above-the layer of atmosphere for the particles to overcome is thinnest during the solar culmination. The most permeable for hypothetical fast particles is the atmosphere above the point on the Earth's surface, for which during the solar culmination there is a coincidence between two directions-of the geomagnetic induction vector at the point and of the invading alpha-particles. Alpha particles are then unaffected by the deflecting force of the geomagnetic field and are most likely to penetrate the atmosphere to the Earth's surface, creating a deadly spot around the "point of impact" where these two directions coincide. The geomagnetic induction vector (geomagnetic vector) for a given point on the Earth's surface has a constant direction relative to the Earth's surface at the point. For the Northern Hemisphere, the geomagnetic vector points down to the point and northward and lies in the plane of its meridian (if the slight misalignment between the geographic North and South magnetic poles is ignored). For example, for the Los Angeles area (33.8° N, 118° W), the USA, the geomagnetic vector descends from south to north with an angle (inclination) relative to the Earth's surface of 47.5° [17]. According to the proposed hypothetical mechanism, the maximum negative effect on the health of residents in the vicinity of Los Angeles should be expected around the moments when the culmination of the Sun, increasing in spring and decreasing in autumn, coincides with the inclination of the geomagnetic vector, i.e. reach a value of 47.5° . This occurs around February 26th and October 15th [17] which are the riskiest dates of the year for outdoor walks at noon, as if by chance a stream of fast alpha particles occurred at that time, they would reach the Earth's surface in the area of Los Angeles. For the same reason, for New York (40.5° N, 74° W), the riskiest days for a midday outdoor walk are April 6 to April 7 and September 5 to September 6, respectively.

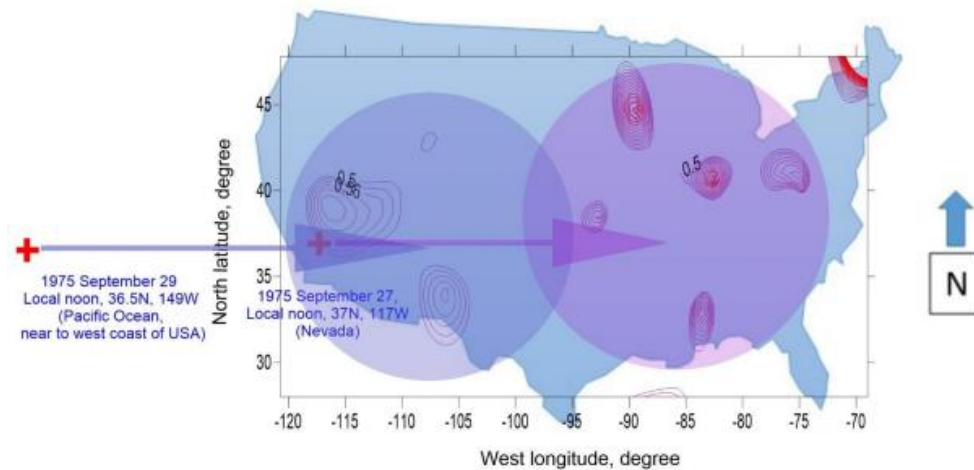


FIG. 7. Alpha radiation flux registration points (red crosses) from September 27th, and 29th 1975, and their corresponding deadly spots on the territory of the USA, tentatively denoted by a circle centered on the point of impact. As it is shown in FIG. 4, the flux with a higher magnitude on September 27th has less impact on the number of IHD deaths, probably because its deadly spot covers a less densely populated area than this one connected in the flux on September 29th .

- The point of impact and the deadly spot around it are unobservable. "Registration point" below is the point on the Earth's surface for which the culmination of the Sun coincides with the inclination of the geomagnetic vector at the time of registration of the alpha flux from the satellite detector. The detector registers the time continuously, so this moment is known. That is, the registration point is known, and tentatively it could serve to determine the location of the impact point and the death spot around it, since, as mentioned above, the impact point is about 30° east of the registration point (the moment of impact is about two hours before the moment of registration). In **FIG. 7**, red crosses indicate the points of registration of the alpha particle stream from September 27th and 29th, 1975. Their coordinates were calculated by determining the latitude of the solar disk by the date of registration of the alpha particle stream and the longitude of the place by the time-hours and minutes of registration [17]. The corresponding points of impact are about 30° east, where the moments of impact occurred two hours earlier than the moments of registration. The **FIG. 7** shows two areas of increased correlation between alpha particle flux (the indicator flux) and the number of IHD deaths—one scattered across the eastern United States and one across the western United States. The areas are corresponding deadly spots, tentatively denoted by a circle centered on the corresponding point of impact. The actual shape and area of the deadly spot on the Earth's surface cannot be precisely determined, but it can be assumed that the effect is observable in a radius of up to about 1000 km around the point of impact and weakens with distance from it. Within the deadly spot, the impact depends on the specifics of the conditions on the Earth's surface—for example, in clear weather at midday, more people should be expected to be outdoors (the highest risk) than in clouds and rain. This explains the patchy nature of the impact within the deadly spot. The two deadly spots cover the most densely populated eastern and western parts of the US, which explains the fact that their peaks in deaths are observed in the statistics for the US at the national level.
- Calculations show that for the Northern Hemisphere, the highest latitude for which a coincidence between the solar culmination and the inclination of the geomagnetic vector is possible is 48° (about June 21st), and the smallest-28° (about

December 21st) [17]. These two geographical parallels delineate the northern and southern borders of Central and Eastern Europe and the Mediterranean where, as stated above, the incidence and mortality rate of IHD is highest. The increased risk of an IHD incident outdoors around local noon is a further argument for the healthfulness of the indoor midday break ('siesta') practiced in Mediterranean countries.

The moments of invasion of alpha particles are unpredictable, but the dates of the maximum risk from them (the dates of coincidence of the two directions -of the movement of the alpha particles and the direction of the geomagnetic vector) can be calculated according to the proposed hypothetical mechanism from the latitude data of the site [17]. As stated above, the dates of maximum risk of alpha particle damage during a midday outdoor walk for Los Angeles are February 26th and October 15th, and for New York, they are April 6-April 7 and September 5-September 6.

Conclusion

The work presents a study revealing a planet-wide health problem – a correlation between the fluxes of solar alpha particles with high energy recorded by satellite detectors in Earth orbit and mortality from the number one killer disease for humanity – ischemic heart disease.

Acknowledgement

The author expresses his gratitude to the thousands of specialists from NOAA, CDC, USA, and Eurostat, EU, without whose noble work the research presented in this work would have been impossible.

REFERENCES

1. Most Common Causes of Death.
2. WHO – Deaths from IHD
3. Khan M.A., Hashim M.J., Mustafa H., et al. Global epidemiology of ischemic heart disease: results from the global burden of disease study. *Cureus*. 2020;12(7).
4. United Nations Statistics Division, Demographic Statistics Database
5. Centers for Diseases Control and Prevention (CDC), USA, National Center for Health Statistics (NCHS), Scientific Data Documentation, Detailed Mortality File, 1962-1992
6. Data from GOES satellites.
7. PSTAR.
8. ASTAR.
9. Data on the geomagnetic field.
10. Neutron Monitors Data Base.
11. Data for Neutron Monitor ALMA-B.
12. Sun Spot Number.
13. Coronal Mass Ejections.
14. What is a solar flare?
15. Solar Flare Index data.

16. What is a Coronal Hole?
17. Takuchev N. Does the Angel of Death Sometimes Use Solar Alpha Particles to Take Our Souls?. Does the Angel of Death Sometimes Use Solar Alpha Particles to Take Our Souls? 2021:1-40.
18. Radionuclide Californium-252