



MODIFIED CELLULOSE ACETATE ULTRAFILTRATION COMPOSITE MEMBRANES FOR ENHANCED DYE REMOVAL

K. RAMBABU* and S. VELU

Chemical Engineering Division, School of Civil and Chemical Engineering,
Vellore Institute of Technology University, VELLORE – 632014 (T.N.) INDIA

ABSTRACT

A series of cellulose acetate (CA) ultrafiltration membrane blended with poly(acrylic acid) (PAA) and iron oxide (Fe_2O_3) was prepared by phase inversion technique. Fe_2O_3 was varied from 0-3 wt% in the casting solution composition to study its effect on the blend membranes. Prepared membranes were analyzed for their morphology, ultrafiltration (UF) features and dye rejection performance. Surface pore studies revealed the increase in the number of pores as well as pore size due to the addition of Fe_2O_3 to CA. Surface roughness was increased drastically for high concentration Fe_2O_3 composite membranes. Surface hydrophilicity was improved due to the addition of Fe_2O_3 in the composite membranes. Porosity measurements confirmed the enhanced porous nature of CA/PAA/ Fe_2O_3 blend membranes than the pristine PES membrane. Pure water flux of the Fe_2O_3 composite membranes was improved to a maximum of four times as compared with pure PES membrane. Dye rejection studies revealed that the blend membranes had almost the same rejection as that of the pristine membrane with a largely enhanced flux rate. Results obtained clearly indicated the better performance of 1 wt% Fe_2O_3 blend membrane among the synthesized UF membranes.

Key words: Ultra filtration, Cellulose acetate, Poly acrylic acid, Iron oxide, Dye rejection.

INTRODUCTION

Membrane separation is a promising technology for separation operations due to its potential advantages over other conventional separation methods like absorption, distillation etc.^{1,2} Ultrafiltration (UF) is a common mode of membrane separation operations for separating dissolved macromolecules from liquid streams using pressure difference as the driving force^{2,3}. Industrially, UF is mainly applied for water and wastewater treatment processes⁴. UF membranes are usually prepared from a wide range of materials, which

* Author for correspondence; E-mail: rambabu.k@vit.ac.in; Ph.: 91-416-2202572; Mo.: 91-9962056278

includes polymers, ceramics, metal oxides, etc. Polymeric membranes are largely preferred for UF membrane synthesis owing to their ease of fabrication and preparation⁵. These polymers include polysulfone^{6,7}, polyethersulfone⁸⁻¹⁰, polyvinylidene fluoride^{11,12} and cellulose acetate^{13,14}.

Cellulose acetate (CA) is an excellent polymeric material for UF membrane synthesis due to its desirable thermal, mechanical and chemical properties¹⁵. Advantages of CA membranes over other membranes such as high rejection efficiency, low cost, easy synthesis and antifouling ability have made CA quite popular in ultrafiltration applications¹⁶. However, pure CA membranes suffer from the limitation of lower fluxes^{15,16}. It has been reported that by blending CA polymer base with other materials, the resulting membrane possessed improved physical properties¹⁵⁻²¹. CA membranes blended with polyether ether ketone [PEEK] showed increased pore size, higher flux and greater hydraulic resistance¹⁷. CA blended with polyurethane and polyvinylpyrrolidone (PVP) exhibited improved protein rejection efficiency¹⁸. The excellent film-forming nature of CA has made it as an ideal base polymer for UF membrane development especially for commercial applications¹⁹. CA and low cyclic dimmer polysulfone blended with poly ethylene glycol (PEG) as additive resulted in increased water flux, porosity and water content²⁰. CA and polyacrylic acid blended membranes have also been successfully investigated²¹.

In recent years, iron oxide particles are widely used as additives for polymeric and ceramic membranes²²⁻²⁵. Iron nanoparticles are excellent absorbent and their presence in the membrane could enhance the membrane's thermo-mechanical stability. Iron oxide blended ceramic/polymeric membranes have been studied for the treatment of phenol /organic matter polluted water²² and for arsenic removal in water^{23,24}. Incorporation of polyaniline and iron oxide to PES membrane resulted in better rejection of copper ions²⁵.

In this current study, modification of the CA membrane using polymeric additive PAA and inorganic additive Fe₂O₃ has been carried out using phase inversion technique. Prepared membranes were characterized for surface roughness, hydrophilicity, porosity and pure water flux. Dye rejection capacity for the pristine and composite PES membranes were analyzed using various dyes solutions. Results for the characterization and performance analysis of the blend membranes were compared against the pure PES membrane.

EXPERIMENTAL

Methods and materials

Cellulose acetate (approximately 45% acetyl content) was procured from Mysore Acetate & Chemical Co. Ltd., India and it was dried at 120°C for 8 hr before being used.

Iron nanoparticles were procured from Reinste Nanoventures Pvt. Ltd., India. Low molecular weight poly acrylic acid (PAA, average $M_w = 40,000$) was purchased from Sigma Aldrich (India). *N, N*-dimethyl formamide (DMF) solvent was obtained from SRL Chemicals (India). Congo red and Orange II dye powders were purchased from Avra Synthesis Pvt. Ltd., India. Freshly prepared deionized water was employed for the preparation of gelation bath, dye solution preparation and membrane storage. All the reagents used in the experimental work were of analytic grade and used as such without any further treatment.

Membrane preparation

Phase inversion technique is the most versatile and widely used membrane preparation method for asymmetric UF membrane synthesis⁴. The cast solution for a given membrane was prepared by dissolving required amounts of the CA, PAA and Fe_2O_3 in DMF solvent, as shown in Table 1.

Table 1: Composition and characterization results for the pure and blended PES membranes

Membrane ID	Membrane composition (w%)				Surface roughness, R_a (in nm)	Contact angle ($^\circ$)	Porosity, ϵ
	CA	PAA	Fe_2O_3	Solvent (DMF)			
M1	18	0	0	82	29.55	56.5	0.27
M2	18	2.5	0	79.5	35.49	52.5	0.31
M3	18	2.5	1	78.5	42.25	49	0.43
M4	18	2.5	2	77.5	63.74	44.5	0.4
M5	18	2.5	3	76.5	97.54	40.5	0.37

Based on our previous studies, the polymeric additive PAA was fixed to a concentration of 2.5 wt% in the composite membrane for which the miscibility of PAA with CA was optimum²⁶. The concentration of Fe_2O_3 was varied from 0 to 3 wt%. The cast solution was magnetically stirred (along with mild heating) for 10 hr to ensure complete dissolution of the CA polymer and modifiers in the DMF solvent. Subsequently, the cast dope was debubbled for 4 hr to remove the trapped air. The solution was then cast on smooth glass plate with the help of a doctor blade for a fixed thickness of 200 μm . The membrane film was allowed for dry phase inversion for 30 sec. Then the glass plate along with the resulting film was immersed in a water bath for wet phase inversion. After 30 min of gelation, the membrane was removed from the water bath and washed with distilled water

to remove the residual solvent. The resulting membrane was then stored in a water bath until further usage.

Membrane characterization

Scanning electron microscopy (SEM) (Supra 55-Carl Zeiss, Germany) was used to analyze the top morphology of the prepared membranes. The membranes were cut into pieces of various sizes and mopped with filter paper. These pieces were immersed in liquid nitrogen for 20-30 s and were frozen. Frozen bits of the membrane samples were used for SEM studies.

Surface roughness (R_a) of all the synthesized membranes was measured through atomic Force Microscopy (AFM) (NTEGRA PRIMA-NTMDT, Ireland). Roughness results obtained were for an effective sampling area of $25 \mu\text{m} \times 25 \mu\text{m}$.

Hydrophilicity of all the prepared membrane was measured in terms of surface water contact angle. The contact angle on the membrane surface was measured using a goniometer (DGX Digidrop, France). The mean water contact angle of each membrane was obtained by averaging the static contact angle measured at four different positions on the membrane sample's surface.

Membrane porosity for all the membranes was calculated by measuring the water uptake capacity of the membrane sample. A given membrane sample was soaked in deionized water for 24 hr. The wet sample weight was then weighed after mopping the excess water on the sample surface using filter paper. Then the wet sample was placed in a vacuum oven at 80°C for 24 hr. The dry weight of the membrane sample was then weighed until the sample weight became constant. The membrane porosity of the sample was then calculated using Eq. (1).

$$\varepsilon = \frac{W_w - W_d}{\rho_w A l} \quad \dots(1)$$

where ε is the membrane porosity, W_w and W_d (kg) are the wet and dry weight of the membrane sample, A (m^2) is the membrane surface area, l (m) is the membrane thickness and ρ_w (kg m^{-3}) is water density.

Pure water flux and rejection analysis for the prepared membranes were carried out in a dead-end UF stirred cell filtration system connected to a nitrogen gas cylinder. The UF stirred cell (Amicon, Model 8400) had an inner diameter of 76 mm and a volume capacity of 400 mL with teflon coated magnetic paddle. The effective filtration area was 38.5 cm^2 . A

nitrogen gas cylinder served as a pressure source for the feed stream. All membranes were compacted at a pressure for 414 kPa for about 1 hr before water flux measurement. Pure water flux of every membrane sample was then measured at an operation pressure of 276 kPa using Eq. (2).

$$J_w = \frac{Q}{A\Delta t} \quad \dots(2)$$

where, J_w – permeate flux ($L\ m^{-2}\ h^{-1}$), Q – quantity of permeate (L); A – membrane area (m^2), Δt – filtration time (h)

Rejection performance of the pure and blended PES membranes was analyzed through dye separation studies. Congo red and Orange II dye solutions at a feed concentration of $0.1\ g\ L^{-1}$ were used for the dye rejection studies. The ultrafiltration of the dye solutions was carried out at 276 kPa in the UF stirred cell. Permeate was collected over defined time intervals in graduated tubes and the tube contents were analyzed for dye concentration. Solute rejection percentage (% SR) was calculated using Eq. (3).

$$\% SR = \left(1 - \frac{C_p}{C_f} \right) \times 100 \quad \dots(3)$$

where, C_p and C_f are dye concentrations in the permeate and feed streams, respectively. The dye concentration of the dyes in the permeate and feed streams was measured using a UV-Vis-NIR spectrophotometer (UV-3600, Shimadzu Corp., USA).

RESULTS AND DISCUSSION

The various characterization and performance results for CA/PAA/ Fe_2O_3 blend membranes were compared against the pure PES membrane. The advantages and limitations of the blend membrane system over the unmodified PES membrane is discussed in the below section.

Scanning electron microscopy

SEM analysis of the top surface morphology revealed that the Fe_2O_3 blended CA membranes showed better porosity when compared to pristine CA membrane. As shown in Fig. 1, it could be seen that the porosity of the Fe_2O_3 blended CA membranes increased due to two effects – (i) Increase in the number of pores, (ii) Increase in the size of the pores. While the former effect was more predominant till 1% Fe_2O_3 in the blend membrane the later effect was more predominant in blend membranes with more than 1% Fe_2O_3 .

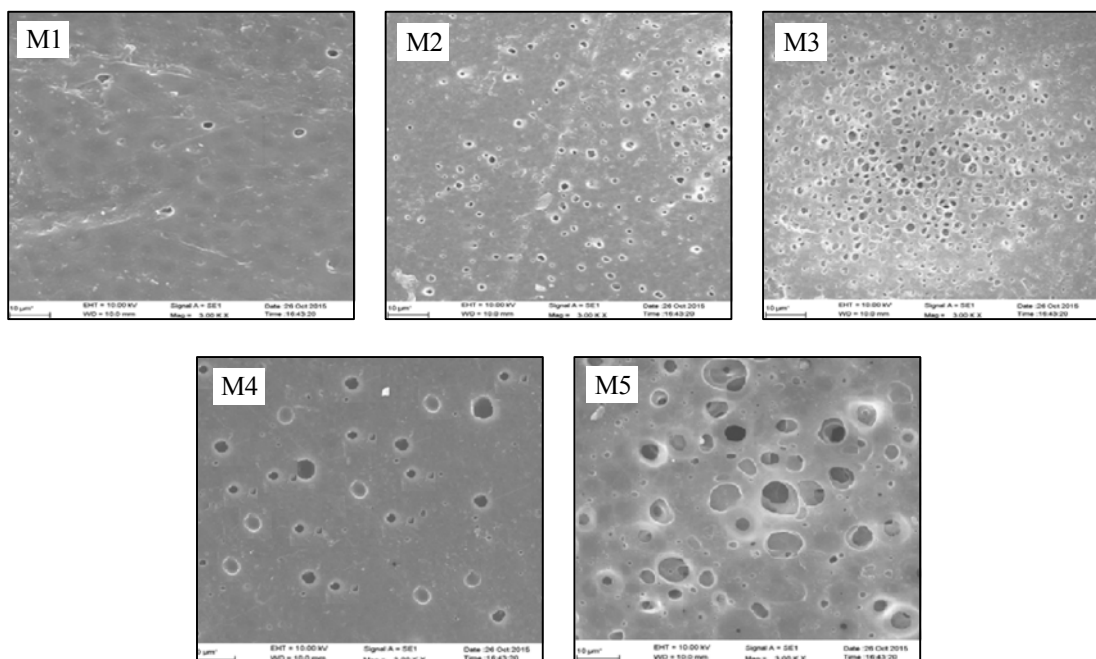
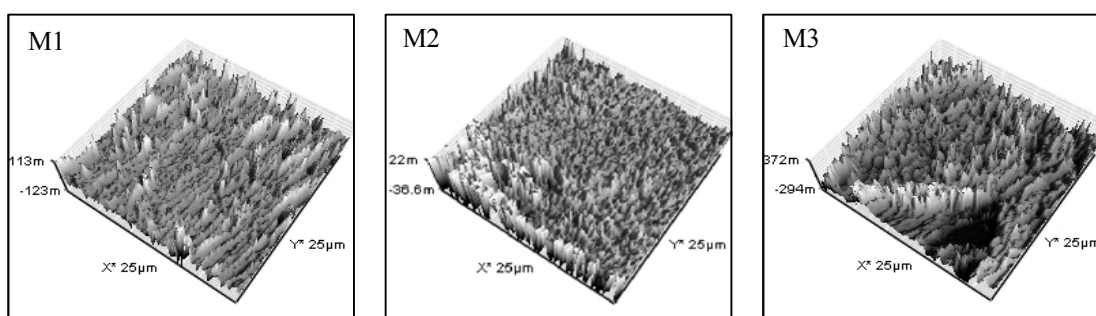


Fig. 1: SEM images of the top surface of the membranes

Atomic force microscopy

In the AFM analysis, as shown in Fig. 2, the lighter or the brighter regions show the nodular structures and the darker regions shows the depressions or pores of the membrane. As shown in Table 1, it was observed that the addition of Fe_2O_3 to CA matrix increased the surface roughness. However, the rate of increase in surface roughness had a rapid growth after a cut-off concentration of 1% for Fe_2O_3 in the casting dope. Increase in surface roughness is an indication for the enhancement in flux through membranes.



Cont...

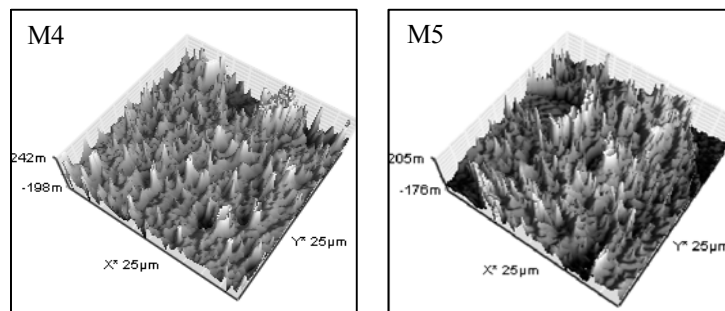


Fig. 2: AFM images of the top surface of the membranes

Surface hydrophilicity, porosity and pure water flux

Water contact angle measurement is one of the most suitable methods for evaluating the surface hydrophilicity of UF membranes¹⁵. By theory, contact angle of hydrophilic surface should be less than that of hydrophobic surface²⁷. As shown in Table 1, it could be seen that the contact angle of the CA/PAA/Fe₂O₃ blend membranes was decreased due to the addition of PAA and Fe₂O₃ to CA matrix. Especially, Fe₂O₃ composite membranes were more hydrophilic than the pure CA and CA/PAA (0% Fe₂O₃) membranes. Contact angle studies confirmed the enhanced hydrophilicity of the Fe₂O₃ blend membranes due to the pronounced hydrophilic effect of the Fe₂O₃ particles. Increase in surface hydrophilicity could make the membrane more fouling resistant due to easy diffusion of solvent (water) through the membrane thickness⁴. Hence, the Fe₂O₃ composite membranes have better chances of antifouling ability than the pristine CA membrane.

Results of the membrane porosity studies, as shown in Table 1, clearly indicated that the porosity of the blend membranes was altered due to the addition of Fe₂O₃. It was evident that, for low concentration of Fe₂O₃ (1% Fe₂O₃) in the casting dope, the membrane structure was enhanced with better porosity. However, at high concentrations of Fe₂O₃ in the casting dope, the dominant viscous effects, as confirmed visually, delayed the phase separation resulting in low membrane porosity. In general, all the Fe₂O₃ composite membranes possessed better porosity than the pristine CA and CA/PAA (0% Fe₂O₃) membranes.

Pure water flux results for all the prepared membranes are presented in Fig. 3. From the figure, it could be seen that the addition of Fe₂O₃ to the CA matrix had boosted the pure water flux upto a maximum of four times as compared with the unmodified CA membrane. Increase in the water flux was due to the enhanced hydrophilicity and the possibly enlarged sublayer (as confirmed from the porosity studies) of the blend membranes, which was caused due to the addition of Fe₂O₃. Further, it could be seen that the pure water flux was

highest for the 1 wt% Fe₂O₃ membrane and there was a decrease in water flux for composite membranes with more than 1% Fe₂O₃. This observation was used to conclude that upto 1% Fe₂O₃ concentration, the hydrophilic effects were dominant for the blend membrane and for high concentration Fe₂O₃ composite membrane (more than 1 wt%), the morphology (porosity) effects were dominant.

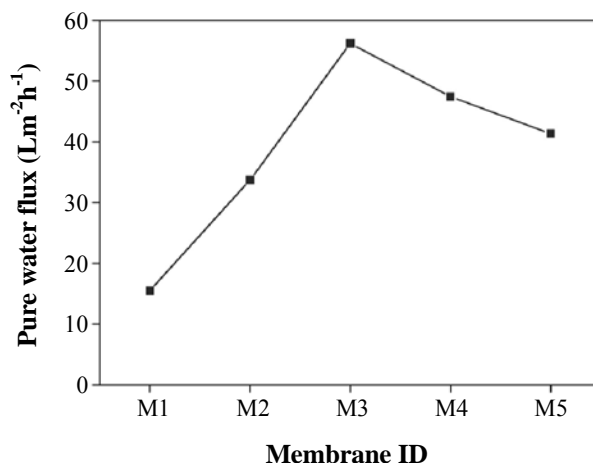


Fig. 3: Pure water flux measurement for the pure and composite CA membranes

Dye rejection studies

Performance of all the prepared membranes was analyzed through dye rejection studies. Congo red and Orange II were used as probe agents for the rejection study. Results of the dye rejection study are presented in Fig. 4 and Fig. 5. From Fig. 4, it could be seen that the dye rejection percentage of the Fe₂O₃ composite membranes was almost same till 1% Fe₂O₃ blend membrane. There was an appreciable decrease in the rejection percentage for high concentration Fe₂O₃ composite membranes owing to their increased porosity. As shown in Fig. 5, the dye permeate flux was greatly increased for the Fe₂O₃ composite membranes. The Fe₂O₃ blend membrane with 1 wt% concentration recorded the highest permeate flux among the synthesized membrane series. Also this membrane was expected to have low fouling due to its less surface roughness and enhanced hydrophilicity as compared with other Fe₂O₃ composite membranes.

Analyzing the characterization and performance results, it was clear that the 1 wt% Fe₂O₃ composite UF membrane was possessing better separation characteristics as compared with all other synthesized membranes. Thus, the 1 wt% Fe₂O₃ composite membrane seems to be a suitable and promising membrane for the application of dye polluted waste water treatment than the pure PES membrane.

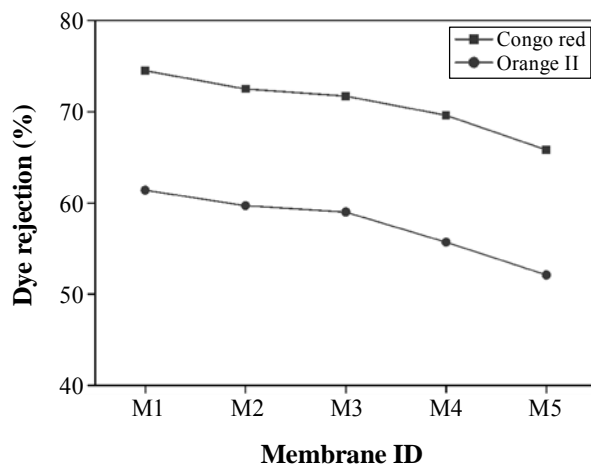


Fig. 4: Dye rejection percentage of the pure and composite CA membranes

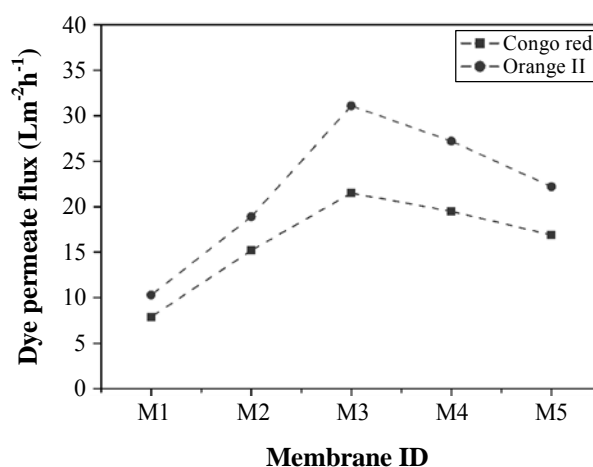


Fig. 5: Dye permeate flux of the pure and blended CA membranes

CONCLUSION

A series of ultrafiltration membranes was prepared by blending fixed amount of polyacrylic acid (PAA) and varying amount of Fe_2O_3 as modifiers with cellulose acetate (CA). Effect of Fe_2O_3 on the membrane morphology, hydrophilicity, porosity and pure water flux of the blend membranes was studied. The addition of Fe_2O_3 to the base PES membrane influenced the membrane properties and morphology remarkably. Characterization studies showed that the PES/PAA/ Fe_2O_3 blend membranes had increased porosity, surface roughness, enhanced surface hydrophilicity and improved porosity. Pure water flux of the composite

membranes was increased to a maximum of four times as compared to pure PES membrane. Dye rejection studies using Congo red and Orange II dye solutions clearly indicated that the rejection efficiency of the Fe₂O₃ blend membranes got reduced slightly but with an elevated flux than the pure CA membrane. A very close analysis on the obtained results revealed the better separation characteristics of 1 wt% Fe₂O₃ blend membrane among the synthesized series. Thus, the 1 wt% Fe₂O₃ composite membrane seems to be a promising candidate for treatment of dye polluted waste water, ensuring high fluxes and effective rejection.

REFERENCES

1. A. Crull, *Membranes for the Nineties: Highlighting Surface Modification Technology*, Business Communications Co., Nonvalk, CT (1990).
2. I. C. Escobar and V. D. Bruggen, In *Modern Applications in Membrane Science and Technology*, Am. Chem. Soc. Books (2011).
3. I. C. Escoba and A. Schäfer, *Sustainable Water for the Future: Water Recycling Versus Desalination*, Elsevier, Netherlands (2010).
4. M. Cheryan, *Ultrafiltration and Microfiltration Handbook*, CRC Press, Florida (1998).
5. I. C. Escobar, *Environ. Prog.*, **24**, 355-357 (2005).
6. Z. Fan, Z. Wang, N. Sun, J. Wang and S. Wang, *J. Membrane Sci.*, **320**, 363-371 (2008).
7. C. Mbareck, Q. T. Nguyen, O. T. Alaoui and D. Barillier, *J. Hazard. Mater.*, **171**, 93-101 (2009).
8. G. Wu, S. Gan, L. Cui and Y. Xu, *Appl. Surf. Sci.*, **254**, 7080-7086 (2008).
9. H. Basri, A. F. Ismail and M. Aziz, *Desalination*, **273**, 72-80 (2011).
10. Y. Liu, G. H. Koops and H. Strathmann, *J. Membrane Sci.*, **223**, 187-199 (2003).
11. S. H. Zhi, L. S. Wan and Z. K. Xu, *J. Membrane Sci.*, **454**, 144-154 (2014).
12. E. Yuliwati and A. F. Ismail, *Desalination*, **273**, 226-234 (2011).
13. M. Sivakumar, A. K. Mohanasundaram, D. Mohan, K. Balu and R. Rangarajan, *J. Appl. Polym. Sci.*, **67**, 1939-1946 (1998).
14. S. Velu, K. Rambabu and L. Muruganandam, *J. Chem. Pharmaceut. Res.*, **5**, 1418-1428 (2013).
15. G. Arthanareeswaran, P. Thanikaivelan, K. Srinivasn, D. Mohan and M. Rajendran, *Eur. Polym. J.*, **40**, 2153-2159 (2004).

16. C. Lv, Y. Su, Y. Wang, X. Ma, Q. Sun and Z. Jiang, *J. Membrane Sci.*, **294**, 68-74 (2007).
17. G. Arthanareeswaran, K. Srinivasan, R. Mahendran, D. Mohan, M. Rajendran and V. Mohan, *Eur. Polym. J.*, **40**, 751-762 (2004).
18. M. Sivakumar, R. Malaisamy, C. J. Sajitha, D. Mohan, V. Mohan and R. Rangarajan, *Eur. Polym. J.*, **35**, 1647-1651 (1999).
19. S. Loeb and S. Sourirajan, *Adv. Chem. Ser.*, ACS Publications, 117-132 (1962).
20. G. Arthanareeswaran, C. S. Latha, D. Mohan, M. Raajenthiren and K. Srinivasan, *Separ. Sci. Technol.*, **41**, 2895-2912 (2006).
21. E. Saljoughi, M. Sadrzadeh and T. Mohammadi, *J. Membrane Sci.*, **326**, 627-634 (2009).
22. B. I. Harman, H. Koseoglu, N. O. Yigit, M. Beyhan and M. Kitis, *Desalination*, **261**, 27-33 (2010).
23. P. Sabbatini, F. Yrazu, F. Rossi, G. Thern, A. Marajofsky and M. F. de Cortalezzi, *Water. Res.*, **44**, 5702-5712 (2010).
24. H. Park and H. Choi, *Water Res.*, **45**, 1933-1940 (2010).
25. P. Daraei, S. S. Madaeni, N. Ghaemi, E. Salehi, M. A. Khadivi, R. Moradian and B. Astinchap, *J. Membrane Sci.*, **415**, 250-259 (2012).
26. S. Velu, K. Rambabu and L. Muruganandam, *Int. J. Chem. Tech. Res.*, **6**, 1855-1857 (2014).
27. K. Nath, *Membrane Separation Processes*, PHI Learning Pvt. Ltd., New Delhi (2008).

Accepted : 24.01.2016